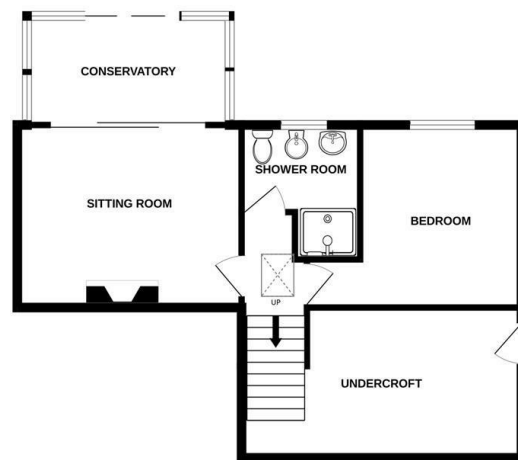


489 Bath Road, Salford, Bristol, BS31 3BA
Tel: 01225 400400 email: salford@daviesandway.com

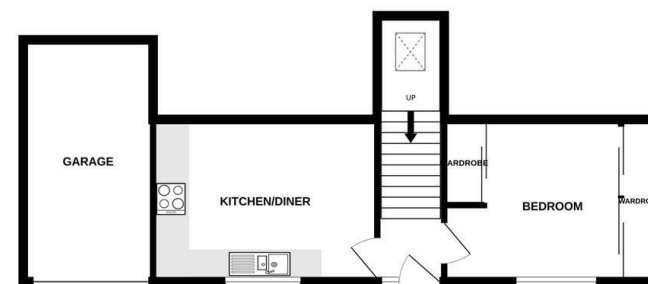
25 Pines Road, Bitton, Bristol, BS30 6JN

| Energy Efficiency Rating | | Current | Potential |
|---|----------------------------|---------|-----------|
| Very energy efficient - lower running costs | | | |
| (92 plus) A | | | |
| (81-91) B | | | |
| (69-80) C | | | |
| (55-68) D | | | |
| (39-54) E | | | |
| (21-38) F | | | |
| (1-20) G | | | |
| Not energy efficient - higher running costs | | | |
| England & Wales | EU Directive 2002/91/EC | | |

BASEMENT
584 sq.ft. (54.2 sq.m.) approx.



GROUND FLOOR
455 sq.ft. (42.2 sq.m.) approx.



TOTAL FLOOR AREA: 1038 sq.ft. (96.4 sq.m.) approx.
Whilst every attempt has been made to ensure the accuracy of the floorplan contained here, measurements of doors, windows, rooms and any other items are approximate and no responsibility is taken for any error, omission or mis-statement. This plan is for illustrative purposes only and should be used as such by any prospective purchaser. The services, systems and appliances shown have not been tested and no guarantee as to their operability or efficiency can be given.
Made with Metropix ©2025



£350,000

A detached split level design two bedroom bungalow located at the back of a cul sac benefiting from a generous mature garden to the rear, a garage with further off street parking, an under croft and is available with no onwards sales chain.

- Delightful elevated position
- Enclosed mature rear garden with several seating areas
- Garage and further off street parking
- Under croft
- Split level design
- No onwards sales chain
- Conservatory which leads out to a raised deck area
- Kitchen - diner
- Well located for Bath (7 miles) and Bristol (6.4 miles)

www.daviesandway.com
CONSUMER PROTECTION FROM UNFAIR TRADING REGULATIONS 2008
These details are for guidance only and complete accuracy cannot be guaranteed. If there is any point which is of particular importance verification should be obtained. They do not constitute a contract or part of a contract. References to tenure of a property are based on information supplied by the seller. The agent has not had sight of the title documents. A buyer is advised to obtain verification from their conveyancer. All measurements are approximate and floor plans are for guidance only. No guarantee can be given with regard to planning permissions or fitness for purpose. No apparatus, equipment, fixture or fitting has been tested. Photographs may have been taken using a wide angled lens and items shown in photographs are NOT necessarily included. Interested parties are advised to check availability and make an appointment to view before travelling to see a property. The property is offered subject to being unsold.
DATA PROTECTION ACT 1998: Please note that all personal information by customers wishing to receive information and/or services from Davies and Way will be processed by the agent and may be shared with third parties. If you do not wish your personal information to be used for any of these purposes, please notify us.



25 Pines Road, Bitton, Bristol, BS30 6JN

Located in the tranquil setting of Pines Road, Bitton, this charming detached bungalow offers a delightful retreat for those seeking comfort and convenience. With two well-proportioned bedrooms, this property is perfect for small families, couples, or individuals looking for a peaceful home.

The bungalow is situated in an elevated position, providing stunning views over a generous and mature garden, which is ideal for gardening enthusiasts or those who simply wish to enjoy the beauty of nature. The property is located at the end of a quiet cul de sac, ensuring a serene environment with minimal traffic, making it a safe haven for children and pets alike.

Inside, the split-level accommodation offers a unique layout that maximises space and light, creating a warm and inviting atmosphere throughout. The property also boasts a garage, along with additional off-street parking and an undercroft, providing ample space for vehicles and storage.

One of the standout features of this bungalow is the absence of an onward sales chain, allowing for a smooth and efficient purchasing process subject to probate. This is an excellent opportunity for buyers looking to settle into a lovely home.

In summary, this delightful bungalow presents a rare opportunity to acquire a well-located property with beautiful garden views, ample parking, and a peaceful setting. It is a must-see for anyone looking to enjoy the best of Bitton living.

ENTRANCE HALL

Entry via a uPVC door with a double frosted window and a further double glazed frosted window to the side. Radiator. A Skylight lets light flood in. Stairs lead down to the lower ground level.

KITCHEN DINER 3.03 x 4.20 (9'11" x 13'9")

This charming kitchen enjoys a lovely front aspect through a double-glazed lattice window, allowing natural light to enhance its warm and inviting atmosphere. A tasteful range of wood-fronted wall and base units provides ample storage, beautifully complemented by cream worktops for a timeless look. The space features an inset stainless-steel one-and-a-half bowl sink with drainer and mixer tap, along with a built-in under-counter oven, inset electric hob, and extractor hood. There is also designated space for a fridge, freezer and washing machine, ensuring both style and practicality. Finished with a dado rail, radiator, and easy-care vinyl flooring, this kitchen perfectly blends classic charm with everyday functionality.

BEDROOM 4.00 into wardrobes x 3.00 (13'1" into wardrobes x 9'10")

A well presented room featuring a double-glazed lattice window with a pleasant front aspect, filling the space with natural light. Offering excellent storage, the room includes two built-in wardrobes with stylish wood-effect sliding doors, one with a mirrored finish. Additional features include a radiator, coved ceiling, and a decorative dado rail, all contributing to a comfortable feel.

LOWER LEVEL

BEDROOM 3.47 x 3.00 (11'4" x 9'10")

A charming bedroom with a double-glazed window overlooking the tranquil rear garden, filling the space with natural light and providing a serene outlook. The room benefits from a thoughtfully designed selection of fitted storage, including wardrobes, side cabinets, and matching overhead units above the bed. Additional features include a radiator and a coved ceiling, creating a harmonious and elegant space.

SHOWER ROOM 2.52 narrows to 1.64 x 2.20 (8'3" narrows to 5'4" x 7'2")

A beautifully appointed shower room featuring a double-glazed frosted window, ensuring both privacy and natural light. The space boasts a generous shower cubicle with a glass sliding door and a modern thermostatic shower. A pristine white suite includes a toilet, bidet and pedestal wash hand basin, complemented by elegant tiled walls and flooring for a sophisticated and practical finish.

SITTING ROOM 4.20 x 3.42 (13'9" x 11'2")

A welcoming and elegant living space designed for both relaxation and entertaining, featuring double sliding doors that open seamlessly into the conservatory while offering delightful elevated views. The room is anchored by a striking focal point: a white marble-style surround and hearth housing a gas fire, creating a warm and inviting atmosphere. Additional features include a radiator, coved ceiling and decorative dado rail, all contributing to a sense of refined comfort.

CONSERVATORY 4.10 x 2.03 (13'5" x 6'7")

A bright and airy conservatory featuring double-glazed side and rear windows, complemented by a double-glazed glass roof that floods the space with natural light. Double-glazed sliding doors provide seamless access to the raised deck and the garden, creating an ideal space for relaxation or entertaining. The room is completed with a radiator, ensuring comfort throughout the year.

OUTSIDE

GARAGE 4.96 x 2.44 (16'3" x 8'0")

A practical and well-equipped garage with access via an up-and-over door. The space benefits from both power and lighting, making it versatile for storage or projects. Housing the Worcester combi boiler, the garage also contains the property's electric and gas meters, ensuring convenient and centralised utility access.

UNDER CROFT 5.32 x 2.85 (17'5" x 9'4")

Accessed via a double glazed door. Power and light is provided making this a useful additional space.

FRONT GARDEN

A block-paved driveway provides convenient off-street parking and leads seamlessly to the front entrance. The front garden has been thoughtfully designed for low maintenance, featuring stone-chipped areas interspersed with mature planting, creating an attractive and welcoming approach to the home.

REAR GARDEN

A truly delightful outdoor space designed for relaxation and enjoyment, featuring multiple areas to unwind. A patio provides the perfect setting for alfresco dining, while a raised deck offers elevated views over the garden. A secluded area beneath a pergola creates a peaceful retreat. The garden also includes a lawned area and a meandering pathway, allowing you to fully appreciate the mature plants and shrubs that enhance its character. Additional features include a greenhouse and an outside tap, ideal for gardening enthusiasts, with the entire garden enclosed by fencing to the side and rear for privacy and security.

TENURE

Freehold.

COUNCIL TAX BAND

According to the Valuation Office Agency website, cti.voa.gov.uk the present Council Tax Band for the property is D. Please note that change of ownership is a 'relevant transaction' that can lead to the review of the existing council tax banding assessment.

ADDITIONAL INFORMATION

The property is subject to probate.
Local authority. South Gloucestershire.
Mobile phone. Good outdoor signal. Source Ofcom.
Broadband. Ultrafast 1000mps source Ofcom.
The property is located within a coal mining reporting area.

